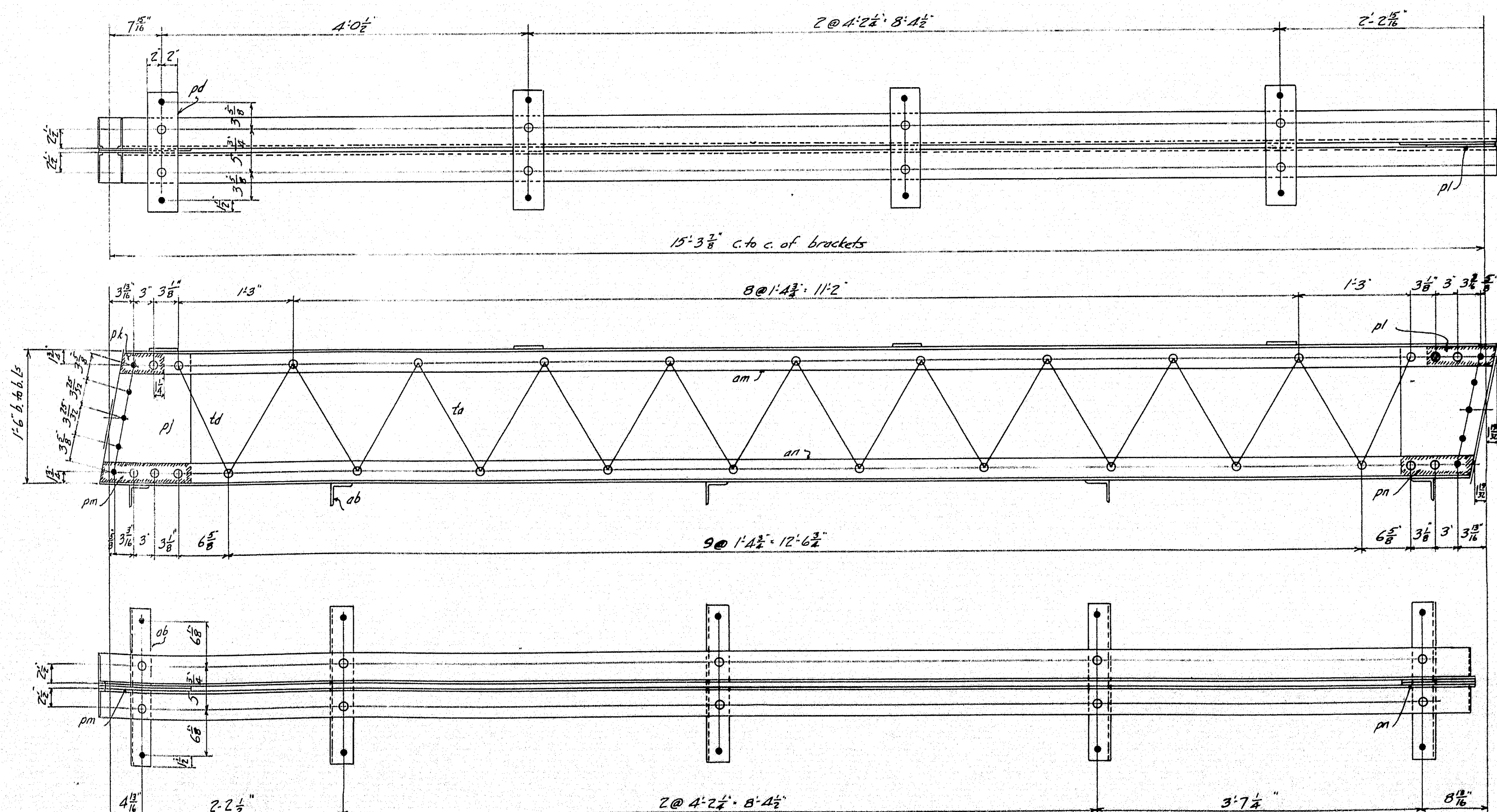


LATTICE GIRDER G2
6 REQUIRED



LATTICE GIRDER G4
1 REQUIRED RIGHT AS SHOWN, 1 REQUIRED LEFT

MATERIAL FOR ONE G2

2 Ls 4' 3" x 5" x 14' 11 1/2" al
2 Ls 4' 3" x 5" x 14' 11 1/2" aj
2 Pls 10' x 5" x 1' 3 1/2" pa
2 Fills 2 1/2" x 5" x 6 1/2" pb
2 Fills 2 1/2" x 5" x 10' pc
4 Pls 4' x 3" x 1' 4" pd
4 Ls 3' 3" x 5" x 1' 9" ab
18 Latt. bars 2 1/2" x 5" x 1' 4 1/2" c/c ta
2 Latt. bars 2 1/2" x 5" x 1' 3 1/2" c/c tb

MATERIAL FOR ONE G3

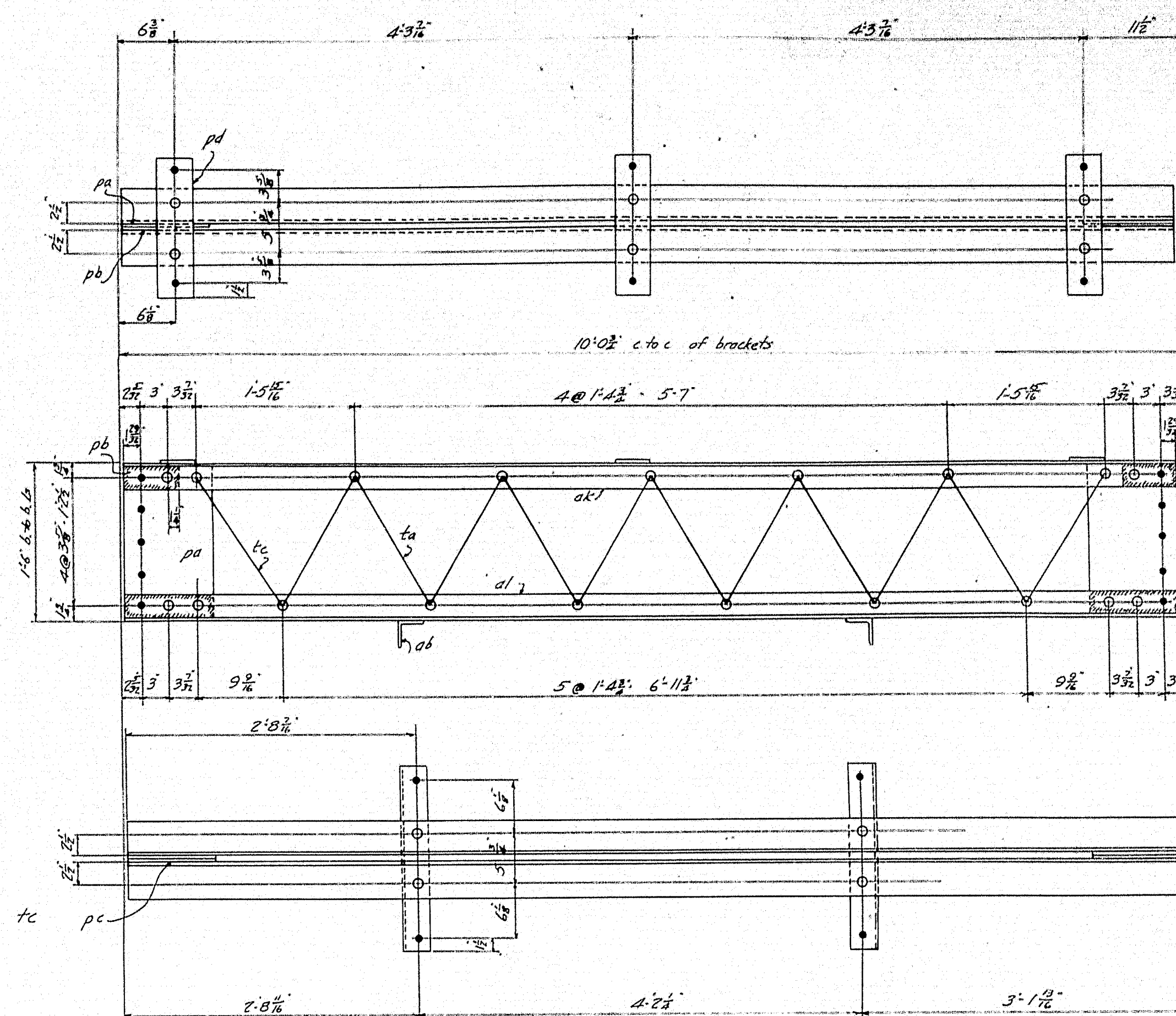
2 Ls 4' 3" x 5" x 10' 0 1/2" dk
2 Ls 4' 3" x 5" x 10' 0 1/2" al
2 Pls 10' x 5" x 1' 5 1/2" pa
2 Fills 2 1/2" x 5" x 6 1/2" pb
2 Fills 2 1/2" x 5" x 10' pc
3 Pls 4' x 3" x 1' 4" pd
2 Ls 3' 3" x 5" x 1' 9" ab
10 Latt. bars 2 1/2" x 5" x 1' 4 1/2" c/c ta
2 Latt. bars 2 1/2" x 5" x 1' 3 1/2" c/c tc

MATERIAL FOR ONE G4

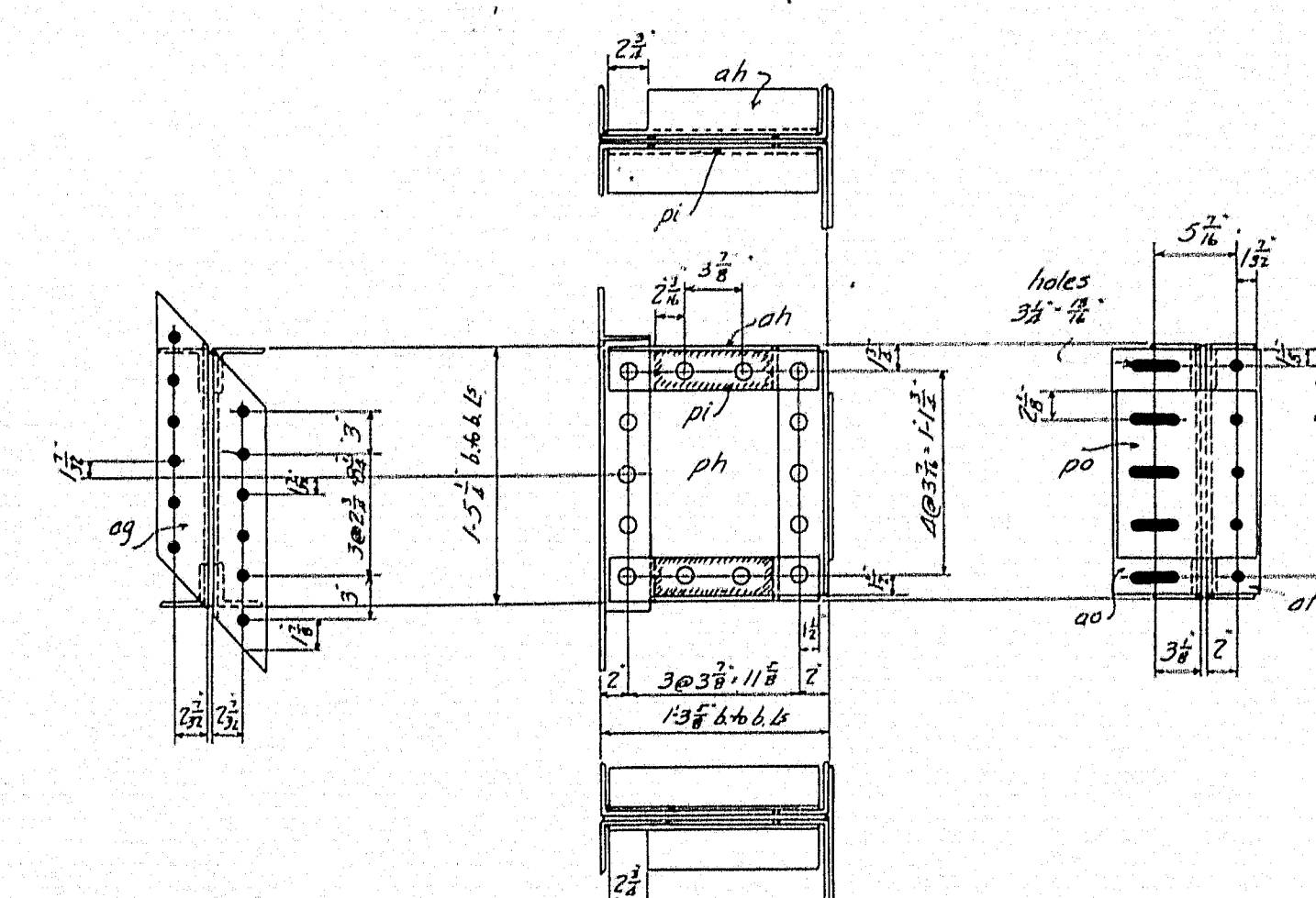
2 Ls 4' 3" x 5" x 15' 4" am
2 Ls 4' 3" x 5" x 15' 4" an
2 Pls 13' x 5" x 1' 5 1/2" pi
1 Fill 2 1/2" x 5" x 9 1/2" pl
1 Fill 2 1/2" x 5" x 1' 1" pm
1 Fill 2 1/2" x 5" x 9 1/2" pn
4 Pls 4' x 3" x 1' 4" pd
5 Ls 3' 3" x 5" x 1' 9" ab
18 Latt. bars 2 1/2" x 5" x 1' 4 1/2" c/c ta
2 Latt. bars 2 1/2" x 5" x 1' 3 1/2" c/c td

MATERIAL FOR ONE B3

1 Pl 17' x 5" x 1' 3 1/2" ph
1 L 3 1/2" x 3 1/2" x 1' 4 1/2" of
1 L 6' 1/2" x 3 1/2" x 1' 4 1/2" oo
2 Ls 3 1/2" x 3 1/2" x 1' 9 1/2" ag
4 Ls 3' 3" x 5" x 1' 2 1/2" ah
4 Fills 2 1/2" x 5" x 8 1/2" pi
1 Fill 9 1/2" x 5" x 11 1/2" po bolt for shipment



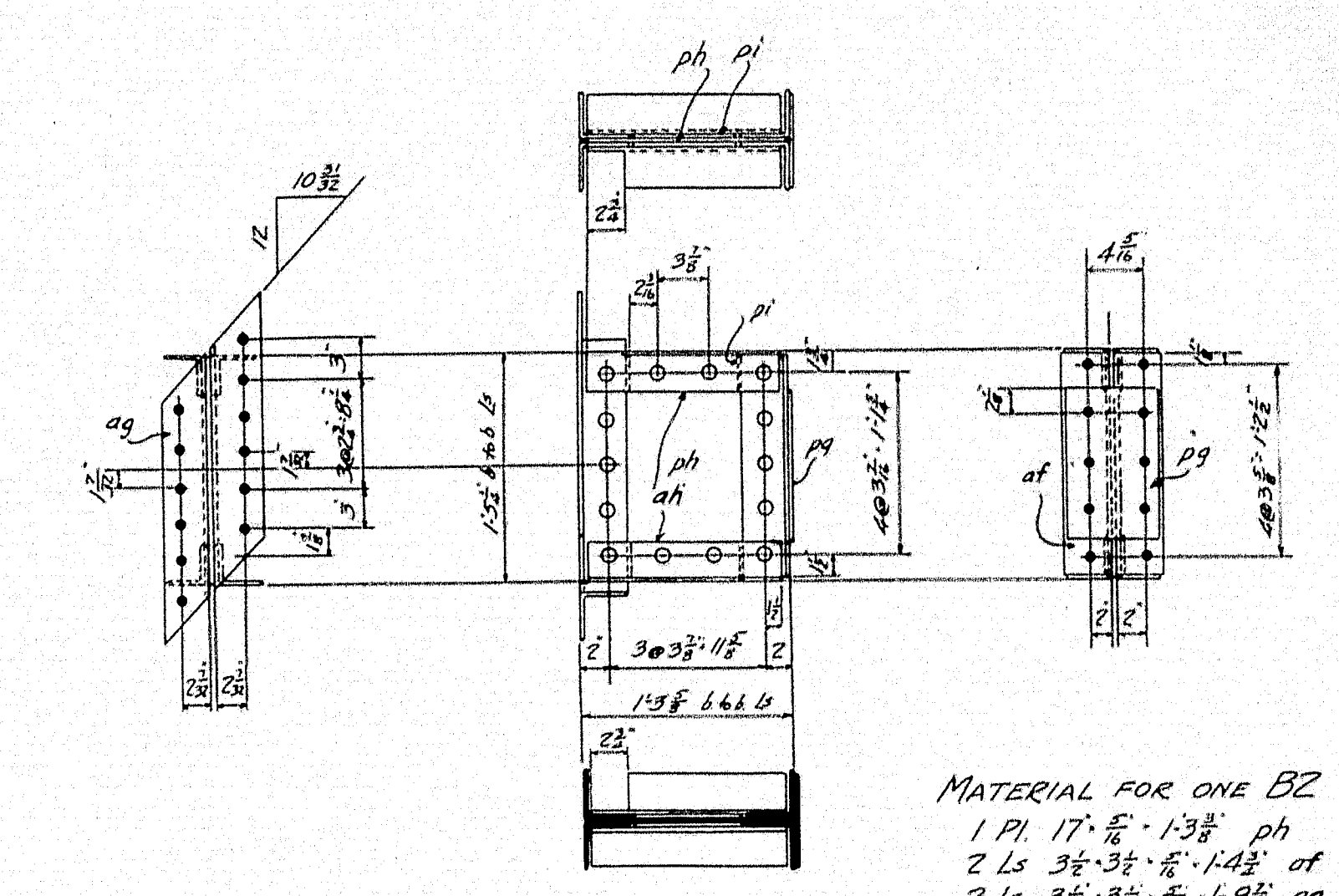
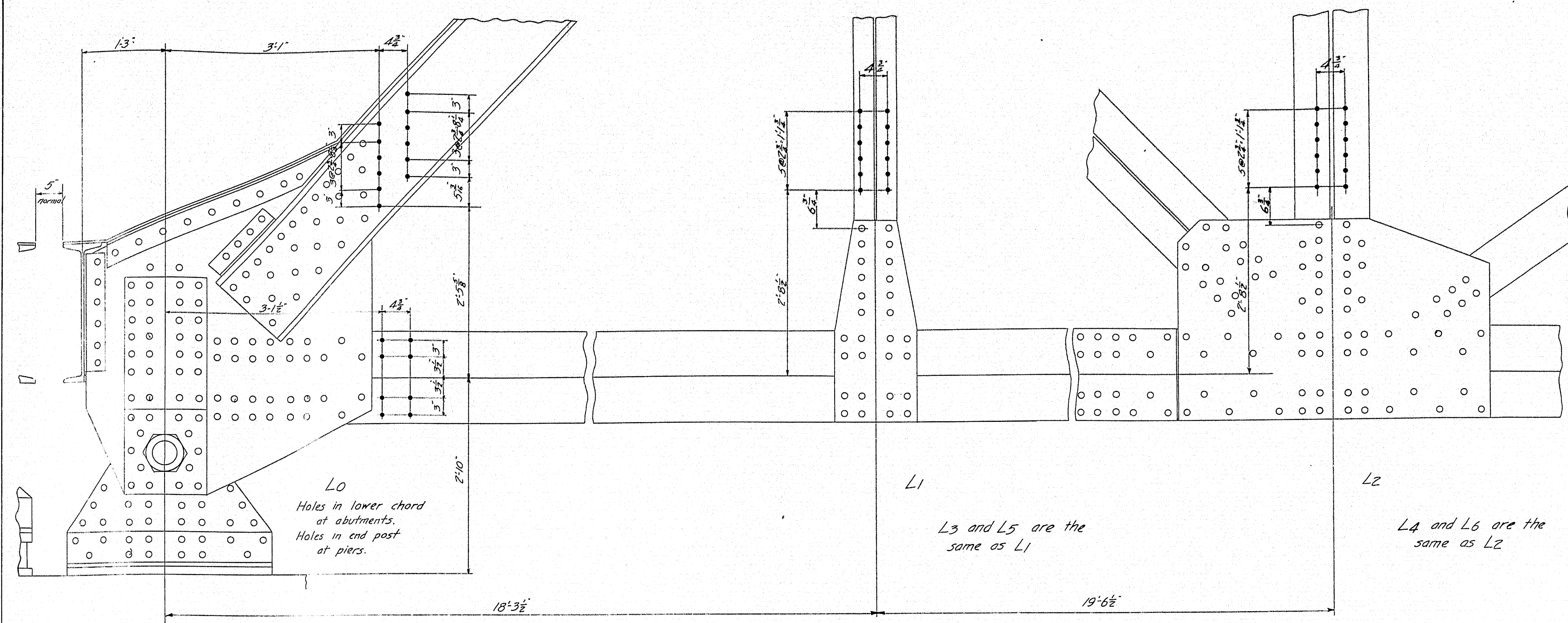
LATTICE GIRDER G3
3 REQUIRED



BRACKET B3
3 REQUIRED

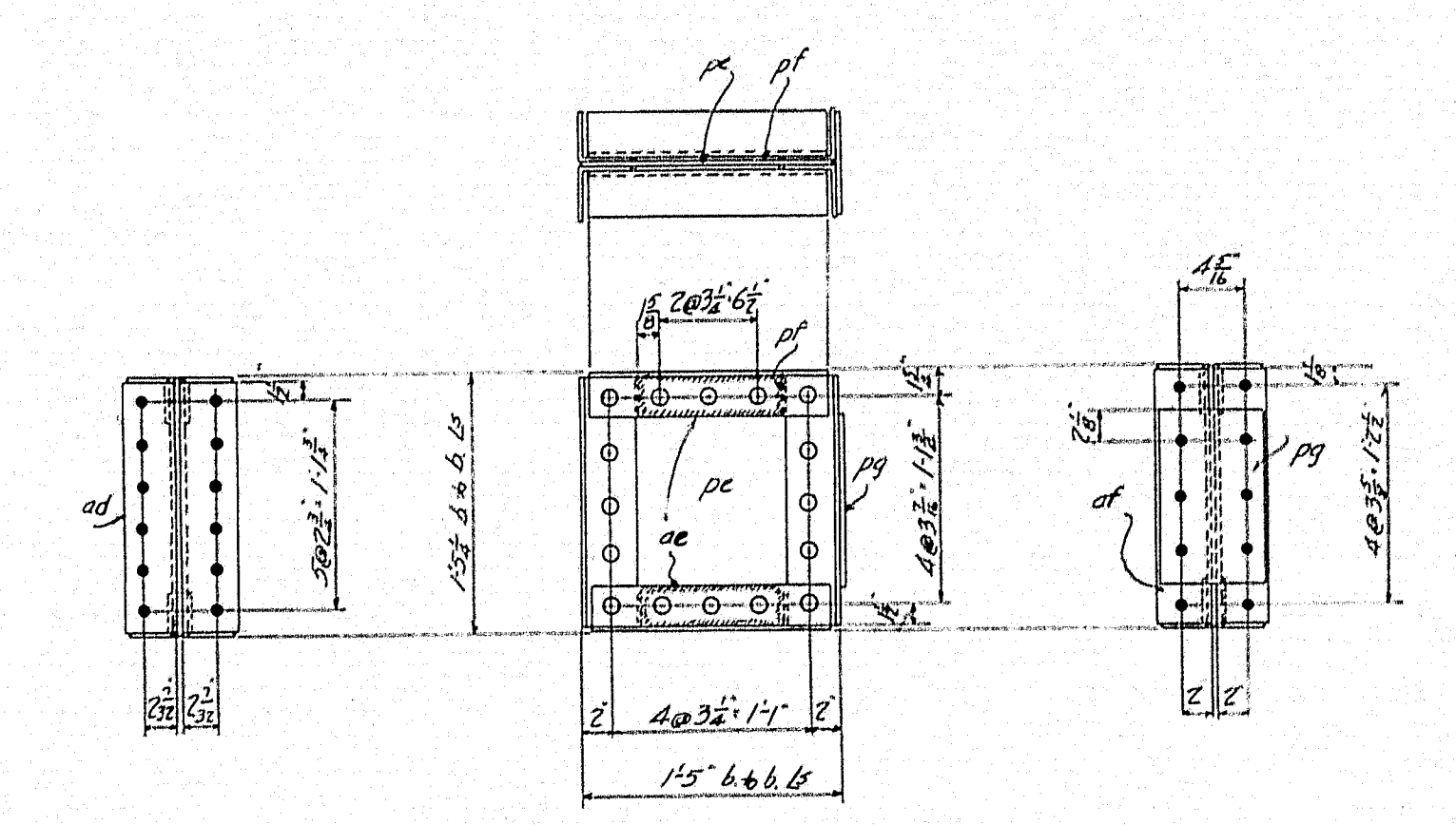
All rivets 3/8"
Open holes 1/2" except as noted

STATE OF MAINE - DOMINION OF CANADA
INTERNATIONAL BRIDGE
OVER THE
ST. JOHN RIVER
BETWEEN
MADAWASKA, ME. - EDMUNDSTON, N.B.
SHEET 3 OF 3
APRIL 17, 1925
PIPE LINE SUPPORT



BRACKET B2
3 REQUIRED

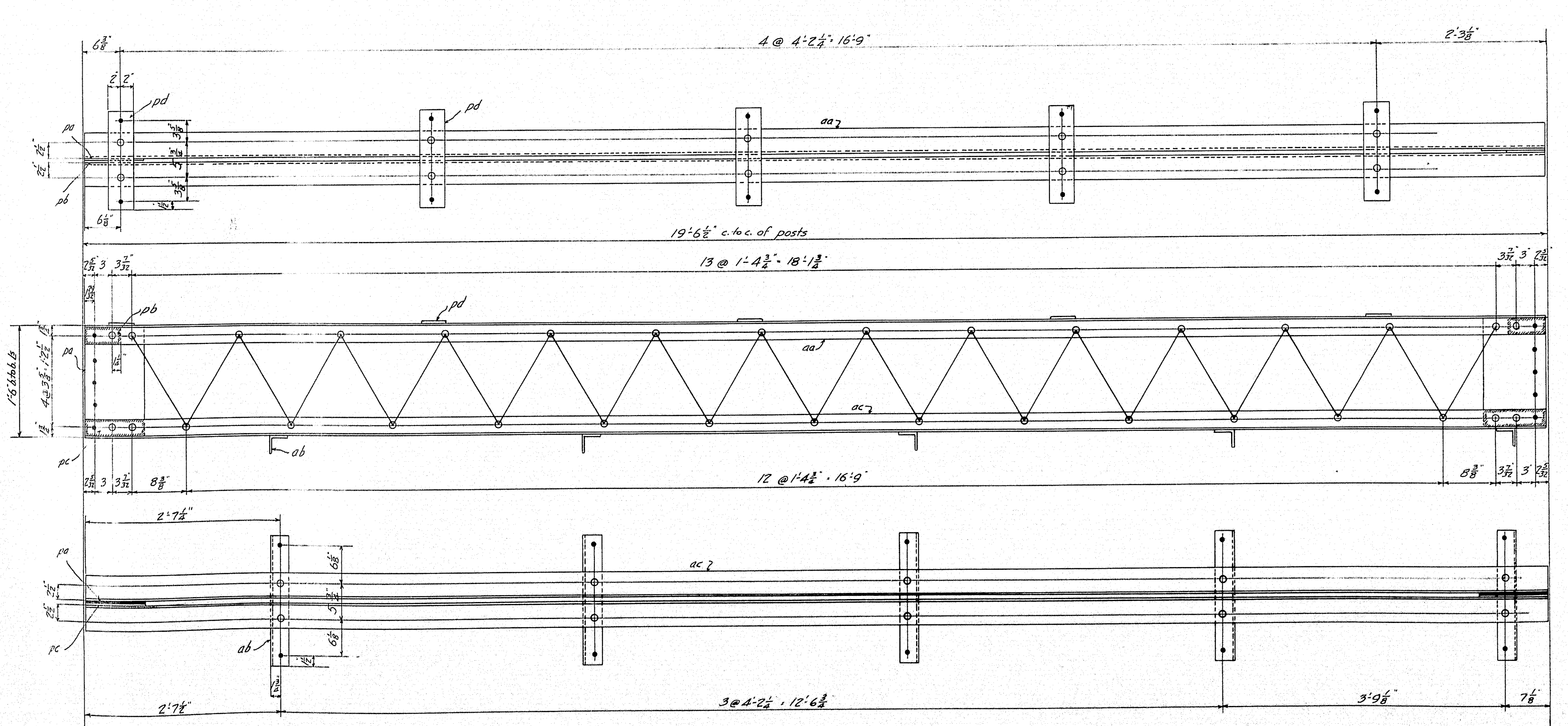
MATERIAL FOR ONE B2
1 Pl. 17'-6" x 1/2" ph
2 Ls 3'-3 1/2" x 1/2" of
2 Ls 3'-3 1/2" x 1/2" ag
4 Ls 3'-3 1/2" x 1/2" ah
4 Fills 2'-6" x 1/2" pi
1 Fill 7'-6" x 1/2" pg bolt for shipment



BRACKET B1 42 REQUIRED

MATERIAL FOR ONE B1
1 Pl. 17'-6" x 1/2" pc
2 Ls 3'-3 1/2" x 1/2" ad
4 Ls 3'-3 1/2" x 1/2" ae
4 Fills 2'-6" x 1/2" pf
1 Fill 7'-6" x 1/2" pg bolt for shipment
2 Ls 3'-3 1/2" x 1/2" of

MATERIAL FOR ONE G1
2 Ls 4'-3" x 1/2" aa
2 Pls 10'-6" x 1/2" pa
2 Fills 2'-6" x 1/2" ph
2 Fills 2'-6" x 1/2" pc
5 Pls 4'-3" x 1/2" ad
5 Ls 3'-3 1/2" x 1/2" ab
26 Lath bars 2'-6" x 1/2" c/c ta
2 Ls 4'-3" x 1/2" ac



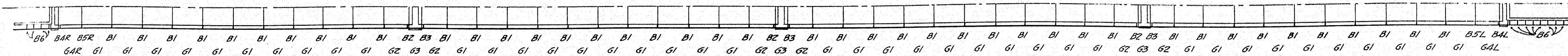
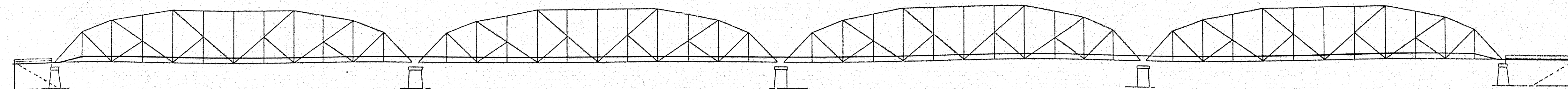
LATTICE GIRDER G1
40 REQUIRED

All rivets 3/4"
Open holes 1/2"

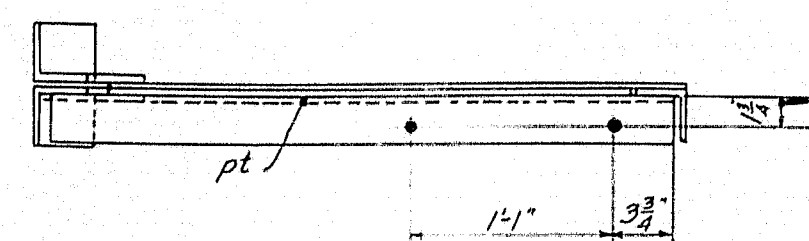
STATE OF MAINE - DOMINION OF CANADA
INTERNATIONAL BRIDGE
OVER THE
ST. JOHN RIVER
BETWEEN
MADAWASKA, ME - EDMUNDSTON, N.B.
SHEET 2 OF 3
APRIL 17, 1925
PIPE LINE SUPPORT.

MADAWASKA,
MAINE.

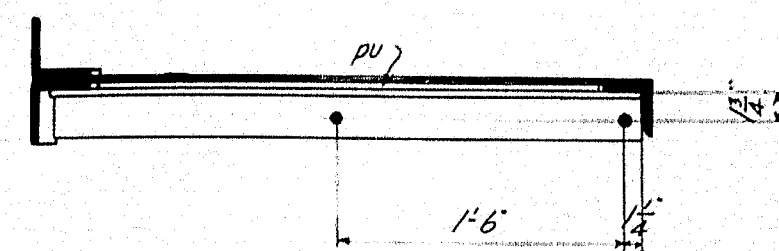
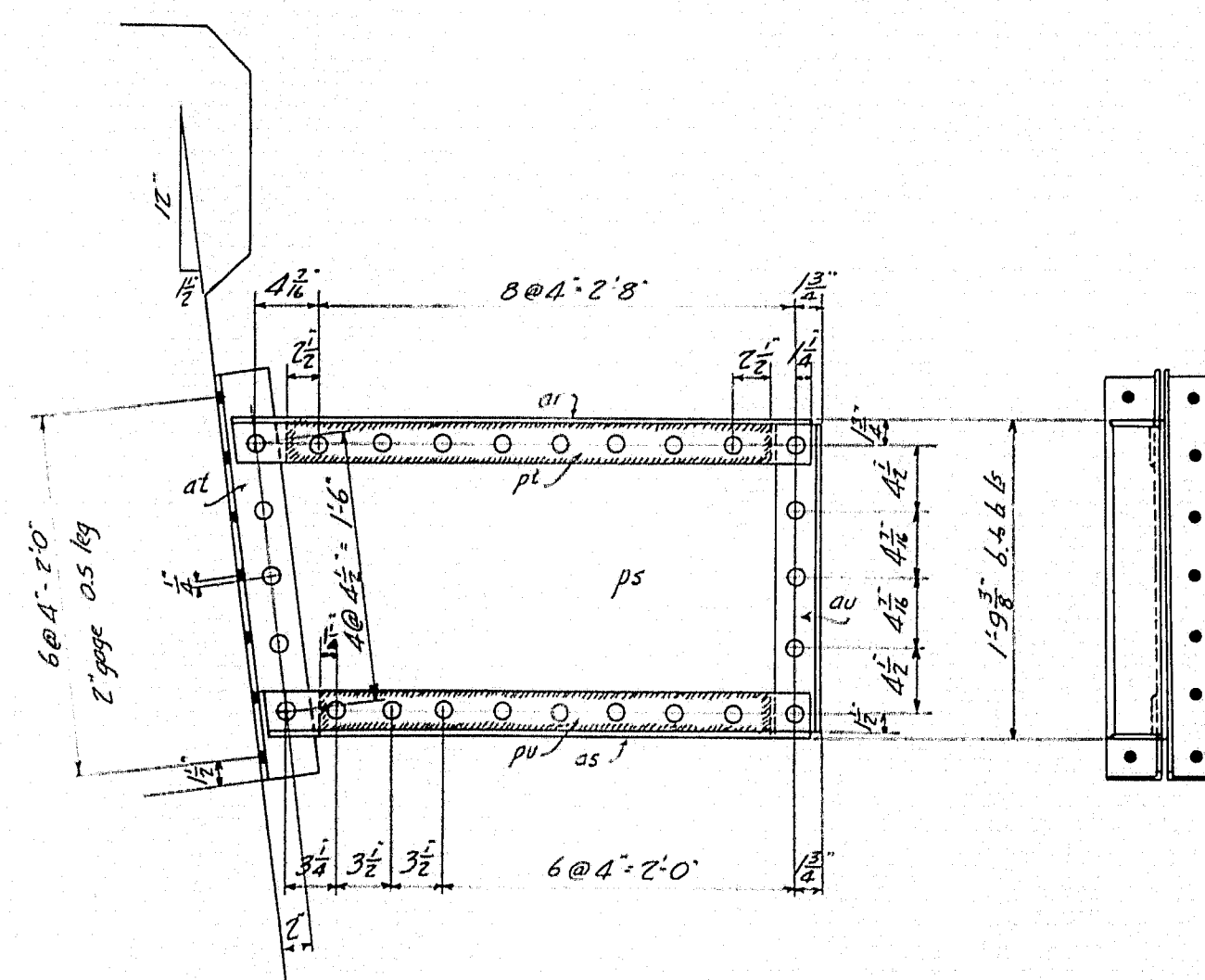
EDMUNDSTON,
NEW BRUNSWICK.



ERECTION DIAGRAM



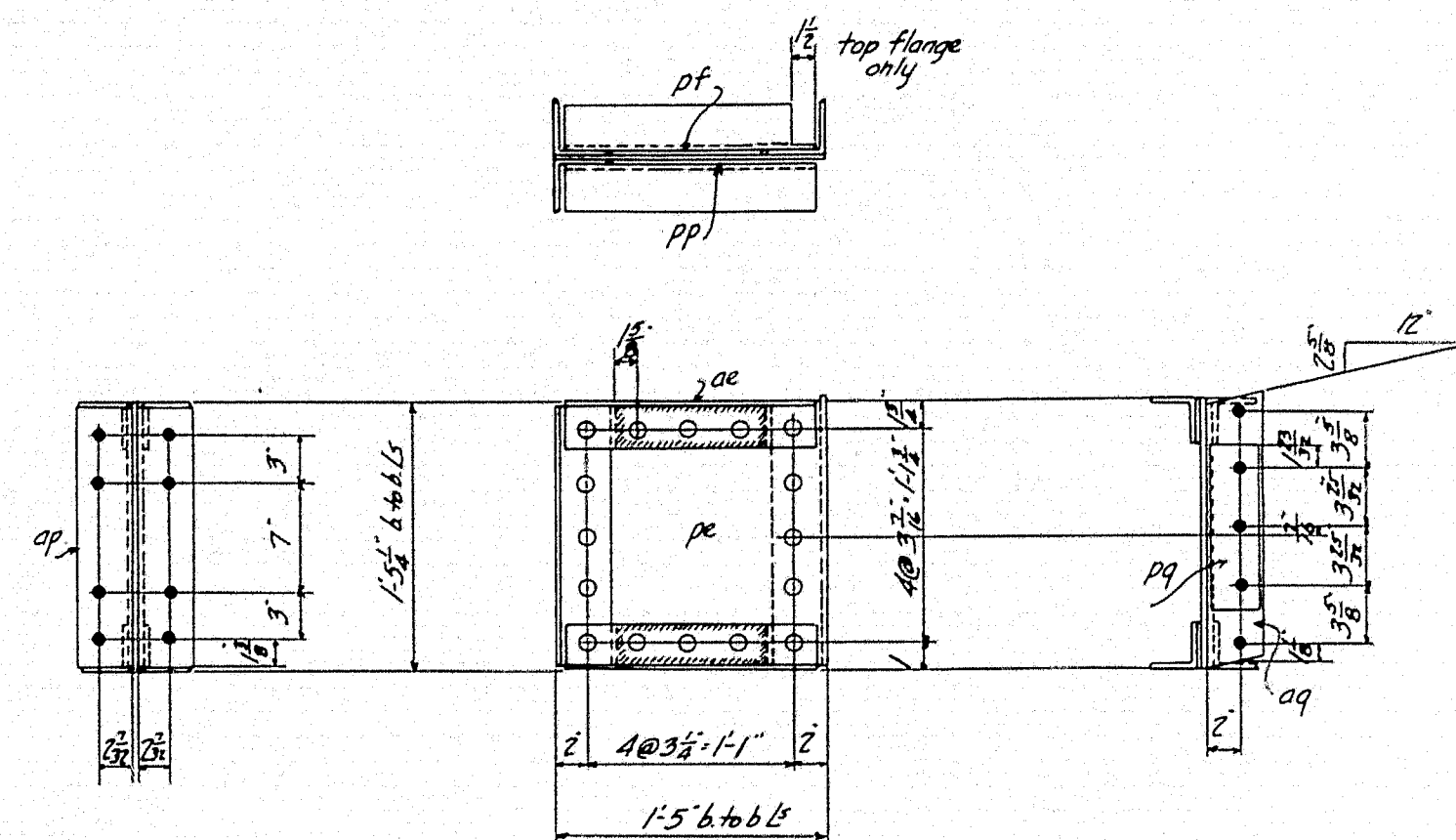
DETAILS OF ANCHORS
Drill holes $\frac{1}{2}$ diam 6" deep
Bolts $\frac{3}{4}$ " upset to $\frac{1}{2}$ "
Gauk with lead



BRACKET B6
12 REQUIRED

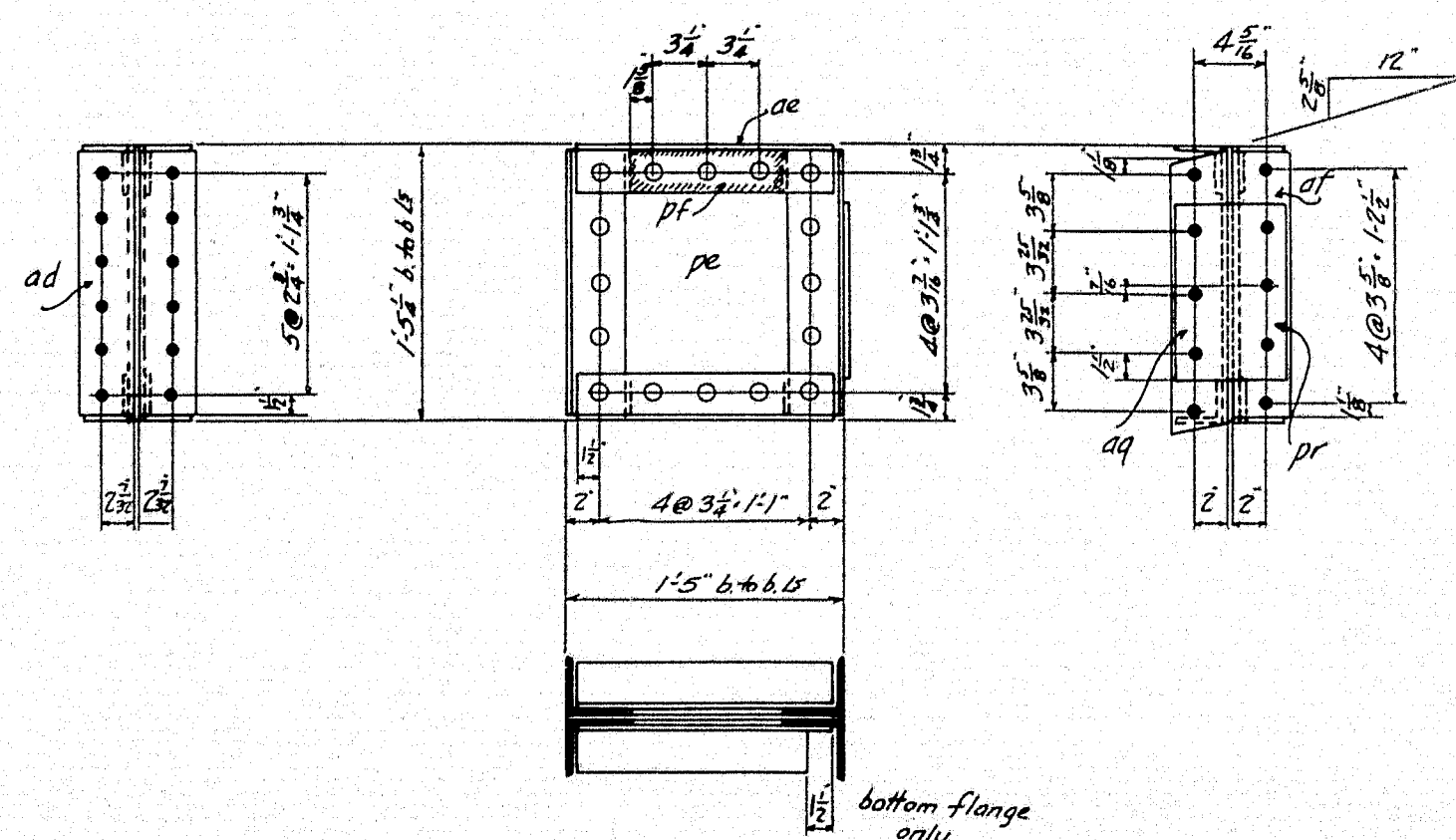
MATERIAL FOR ONE B6

1 L 3'-3" $\frac{1}{2}$ " $\frac{1}{4}$ " ar
1 L 3'-3" $\frac{1}{2}$ " $\frac{1}{4}$ " as
1 Pl. 21" $\frac{1}{2}$ " $\frac{1}{4}$ " ps
2 L 3'-3" $\frac{1}{2}$ " $\frac{1}{4}$ " at
1 L 3'-3" $\frac{1}{2}$ " $\frac{1}{4}$ " au
1 Fill 2'-3" $\frac{1}{2}$ " $\frac{1}{4}$ " pt
1 Fill 2'-3" $\frac{1}{2}$ " $\frac{1}{4}$ " pu



BRACKET B4L

1 REQUIRED RIGHT AS SHOWN
1 REQUIRED LEFT



BRACKET B5L

1 REQUIRED RIGHT AS SHOWN
1 REQUIRED LEFT

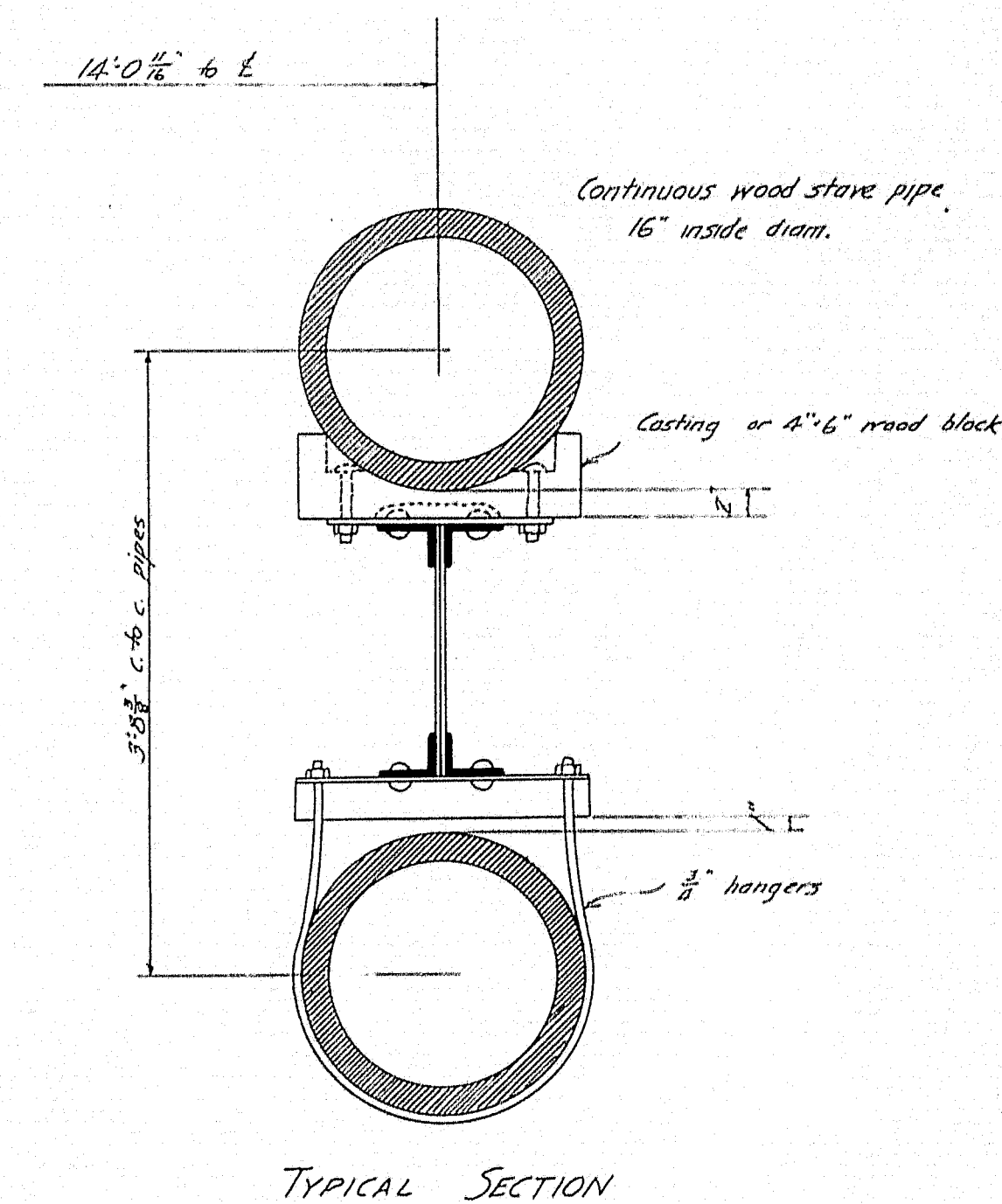
MATERIAL FOR ONE B4

4 Ls 3'-3" $\frac{1}{2}$ " $\frac{1}{4}$ " ac
1 Pl. 17" $\frac{1}{2}$ " $\frac{1}{4}$ " pc
2 Ls 3'-3" $\frac{1}{2}$ " $\frac{1}{4}$ " ap
1 L 3'-3" $\frac{1}{2}$ " $\frac{1}{4}$ " aq
2 Fills 2'-3" $\frac{1}{2}$ " $\frac{1}{4}$ " pf
2 Fills 2'-3" $\frac{1}{2}$ " $\frac{1}{4}$ " pp
1 Fill 3'-3" $\frac{1}{2}$ " $\frac{1}{4}$ " pq bolt for shipment

MATERIAL FOR ONE B5

4 Ls 3'-3" $\frac{1}{2}$ " $\frac{1}{4}$ " ac
1 Pl. 17" $\frac{1}{2}$ " $\frac{1}{4}$ " pc
2 Ls 3'-3" $\frac{1}{2}$ " $\frac{1}{4}$ " ad
1 L 3'-3" $\frac{1}{2}$ " $\frac{1}{4}$ " aq
1 L 3'-3" $\frac{1}{2}$ " $\frac{1}{4}$ " at
4 Fills 2'-3" $\frac{1}{2}$ " $\frac{1}{4}$ " pf
1 Fill 7'-3" $\frac{1}{2}$ " $\frac{1}{4}$ " pr bolt for shipment

All rivets $\frac{3}{4}$ "
Open holes $\frac{1}{2}$ "



TYPICAL SECTION

STATE OF MAINE - DOMINION OF CANADA
INTERNATIONAL BRIDGE
OVER THE
ST. JOHN RIVER
BETWEEN
MADAWASKA, ME. - EDMUNDSTON, N.B.
SHEET 1 OF 3
APRIL 17, 1925.
PIPE LINE SUPPORT